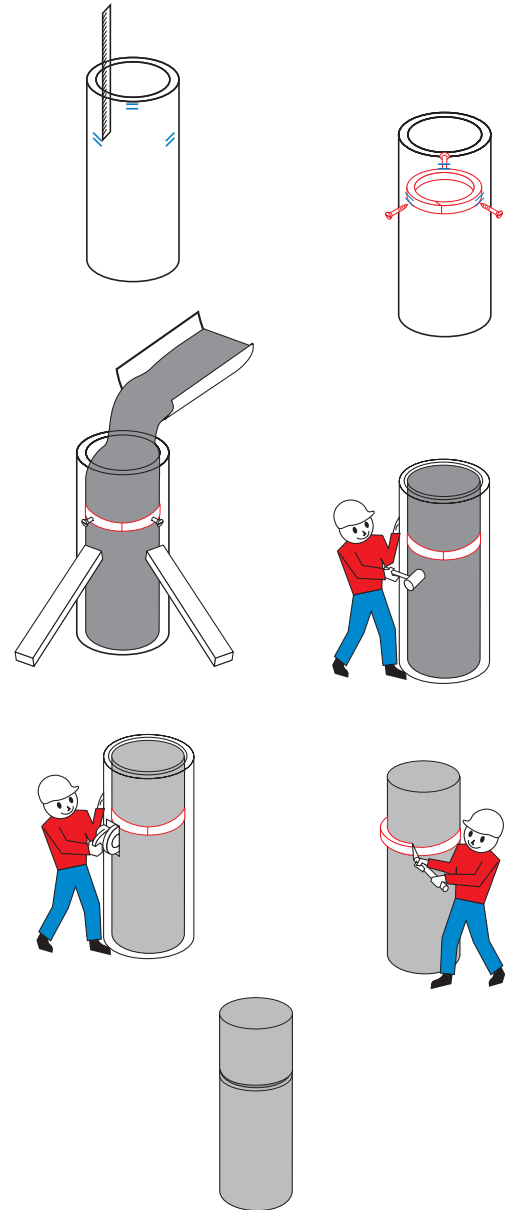


Accent your concrete columns with decorative recess rings.

HOW TO USE:

1. Measure and mark position for the Recess Ring on the Kolumn Form.
2. Secure Ring inside the Kolumn Form using screws provided in the package as illustrated in figure 2.
3. Liberally apply form release material to the Recess Ring. Then pour concrete into form.
4. Immediately following the pour, vibrate the areas around the Recess Ring using a vibrating tool or by repeatedly hitting outside the form around the ring to insure concrete flow to the edges.
5. Allow concrete to cure at least 24 hours and remove the screws securing the Recess Ring in place. Remove the concrete column form from the column, leaving the Recess Ring on the column.
6. Using a pry bar on the ring slit, pry the ring off of the column, revealing the recess.
7. Finish form as needed.



Additional Application Ideas:

- For double thickness rings, cut away a portion of length from one ring and put that ring inside the other prior to insertion in the column form.
- To double the width of the rings, use two rings on top of each other in the form.

